

Powerful, Light and Versatile Performance C-Arm

OSCAR



OSCAR

SERIES from Genoray

Driven by a passion for X-ray technology, Genoray is committed to leading a healthy lifestyle by constantly improving our products.

GENORAY
MAKES THE
INVISIBLE VISIBLE

Genoray is committed to contributing to the health and happiness of human life.

OSCAR 15

Exceptional, All-round FPD C-Arm

- 15kW HFG
- Flat-Panel Detector (26x26cm, CMOS)
- Wide FOV, low noise
- 150° wide orbital rotation
- DSA (Angiography, Road map, Post processing)



OSCAR prime

Versatile, Convenient FPD C-Arm

- 5.3kW HFG / 4.5 kW HFG
- Flat-Panel Detector (26x26cm, CMOS), (23x23cm, a-Si)
- Active air cooling system
- Wide FOV, low noise
- 180° wide orbital rotation
- DSA (Angiography, Road map, Post processing)



OSCAR classic

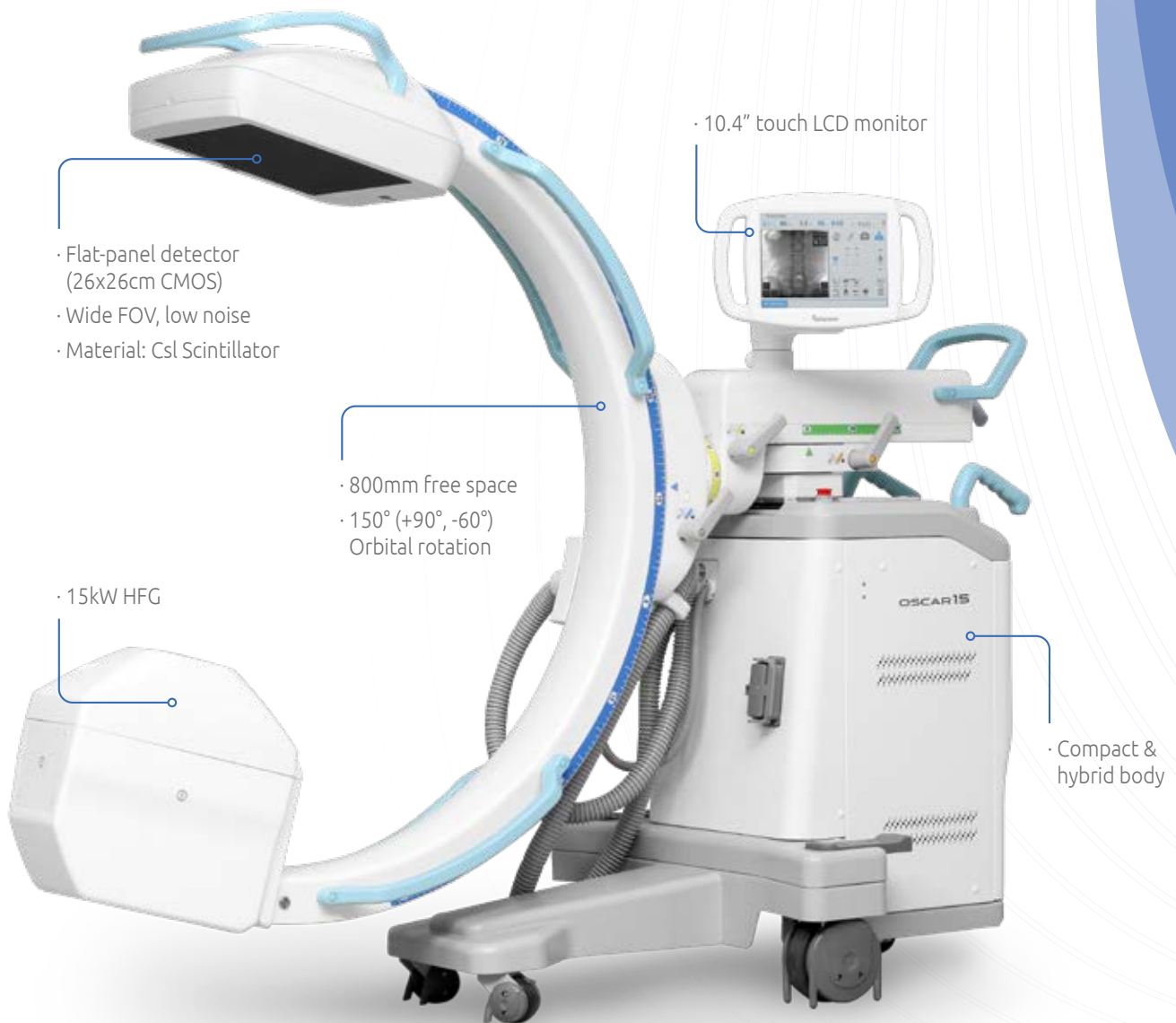
Classical, Well-balanced I.I. C-Arm

- 5.3kW HFG / 4.5kW HFG
- 9" Image Intensifier
- Active air cooling system
- Wide FOV, low noise
- 150° wide orbital rotation
- DSA (Angiography, Road map, Post processing)



OSCAR 15

The OSCAR 15 fulfills various operational needs with exceptional images produced by a self developed CMOS detector. It is a culmination of decades worth of X-Ray experience at Genoray.



15

Flat-Panel

- 26x26cm CMOS

HFG

- 15kW HFG

DSA

- Angiography
- Road Map
- Post Processing

Exceptional, All-round FPD C-Arm



26x26cm CMOS



15kW HFG



150° Dynamic
Orbital Rotation



10.4"
Touch Screen



Laser Pointer



Low Dose



Free space 800mm
SID 1,000mm



DSA



Dual Foot Switch
(Shot/Save)



DICOM 3.0
CD/DVD Burner
USB Port



Wide Monitor



Waterproof
Keyboard & mouse

Wide LCD Monitor



Monitor cart



OSCAR prime

The OSCAR Prime is a unique system which possesses a 180 degree orbital rotation for maximizing the operational environment. Using the same self-developed CMOS detector, it produces high quality images.



Flat-Panel

- 26x26cm CMOS
- 23x23cm a-Si

Wide Orbital Rotation

- 180° (+90°, -90°)

DSA

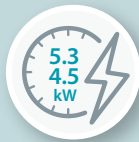
- Angiography
- Road Map
- Post Processing

prime

Versatile, Convenient FPD C-Arm



26x26cm CMOS
23x23cm a-Si



5.3kW HFG
4.5kW HFG



180° Dynamic
Orbital Rotation



10.4"
Touch Screen



Active Air Cooling



Low Dose



Free space 800mm
SID 1,000mm



DSA



Dual Foot Switch
(Shot/Save)



DICOM 3.0
CD/DVD Burner
USB Port



Wide Monitor



Waterproof
Keyboard & Mouse

Wide LCD Monitor



Monitor cart



OSCAR classic

The Oscar Classic is a highly popular system all over the world with a stable output to produce high quality images. The convenient touch screen and compact design leads to a more convenient way to acquire images.



9" Image Intensifier

- High-resolution Images

Wide Orbital Rotation

- 150° (+90°, -60°) Orbital Rotation

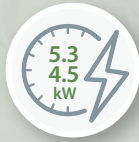
Active Air Cooling System

- To prevent overheating
- To offer longer duration of operation

Classical, Well-balanced I.I. C-Arm



9" Image Intensifier



5.3kW HFG
4.5kW HFG



150° Dynamic
Orbital Rotation



10.4"
Touch Screen



DSA



Active Air Cooling



Free space 800mm
SID 1,000mm



Low Dose



Dual Foot Switch
(Shot/Save)



DICOM 3.0
CD/DVD Burner
USB Port

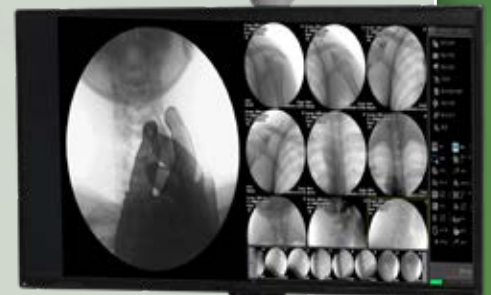


Wide Monitor



Waterproof
Keyboard & Mouse

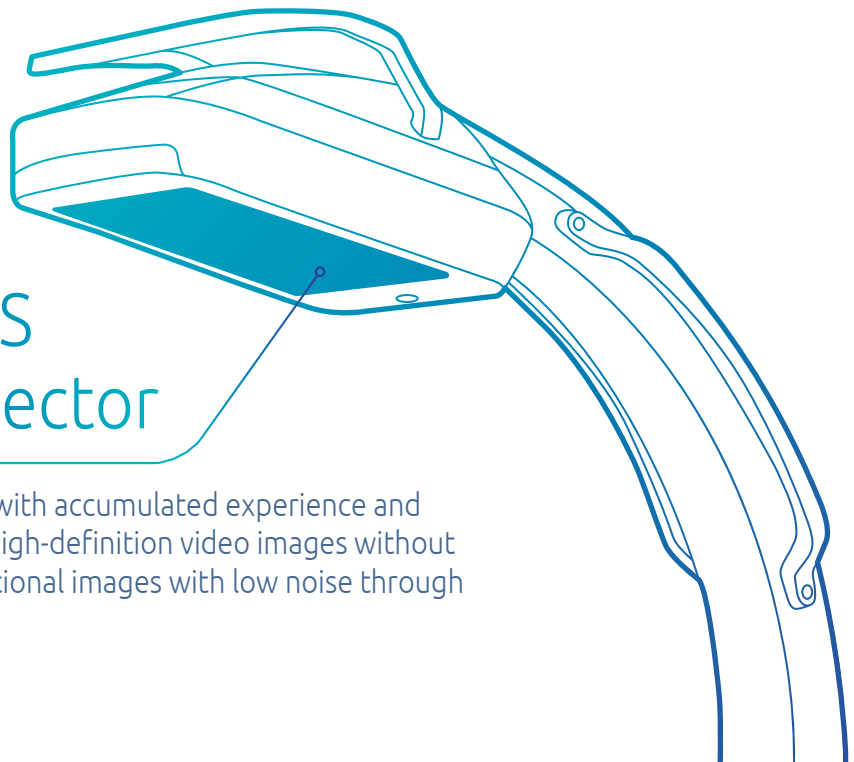
Wide LCD Monitor



Monitor cart



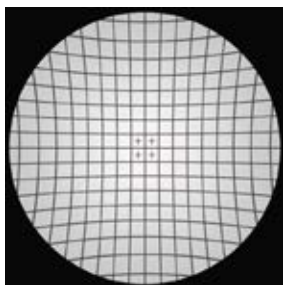
Genoray CMOS Flat Panel Detector



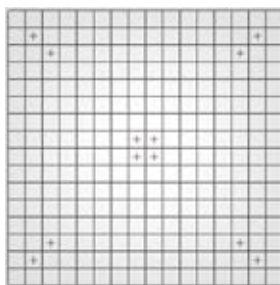
The CMOS detector, developed with accumulated experience and technology, enables to achieve high-definition video images without afterimages and provides exceptional images with low noise through minimal x-ray exposure.

Exceptional Image Quality

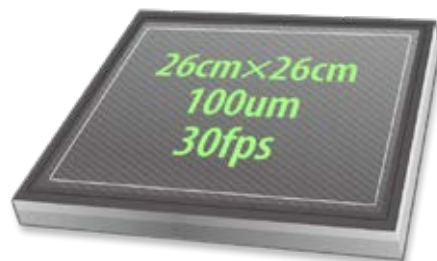
With the optimal flat panel detector size of 26x26cm you will acquire clear image with high quality resolution. It allows accurate diagnosis in all procedures.



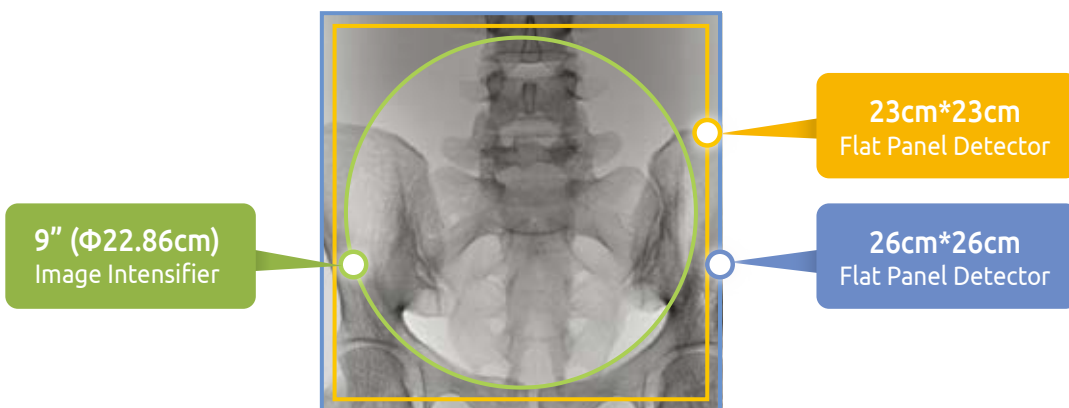
<Image Intensifier>



<FPD>



* In house manufacturing



* Covers wider area compared to conventional 9" Image Intensifier

Live image & Communication

User-friendly 10.4" touch screen operation panel enables two-way communication between doctor and operator by using live image.



Live image display

Maximize positioning and ease of use
(Superior communication between physician and staff)
* Excellent legibility with Anatomical Preset & Pop-up menu

Display options

- Monitor : 34" (Color), 19" Dual (Mono)
- L/R Swap, Live Max. mode, Live/Refer. 1:1 mode

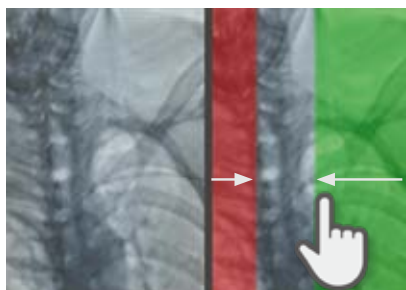
OSCAR SERIES

Features

X-ray Dose Management

VIRTUAL COLLIMATION

A virtual collimator allows for the selection of a desired field of view, while reducing the amount of radiation exposure.



DOSE STRUCTURED REPORT

The Dose SR allows for an efficient radiological workflow, improves patient care and enhances working conditions.

AUTO COLLIMATION

Prevention of unnecessary X-ray exposure by focusing on the area of interest while automatically collimating the surrounding areas.



Image Processing

EDGE ENHANCEMENT

The edges are enhanced for a more accurate diagnosis



MOTION CORRECTION

Detects movement and reduces the blur on the image after exposure.



METAL CORRECTION

To prevent over radiation or low quality images interrupted by metal.





Powerful Software, **ZENIS**

A total solution providing convenient acquisition, storage, management, communication and print with a user friendly interface.

- Convenient diagnostic functions for easy patient / image management
- Accurate diagnostic tools
- Improve the efficiency of your hospital management
- Perfect compatibility with all PACS
- A must have for a digitally equipped hospital
- Convenient communication and management for your customers

Image Management

Invert, rotation, zoom In/out, magnifying glass and etc.

Measurement & Annotation

Measurement of length and angle
Mark line, arrow, and characters

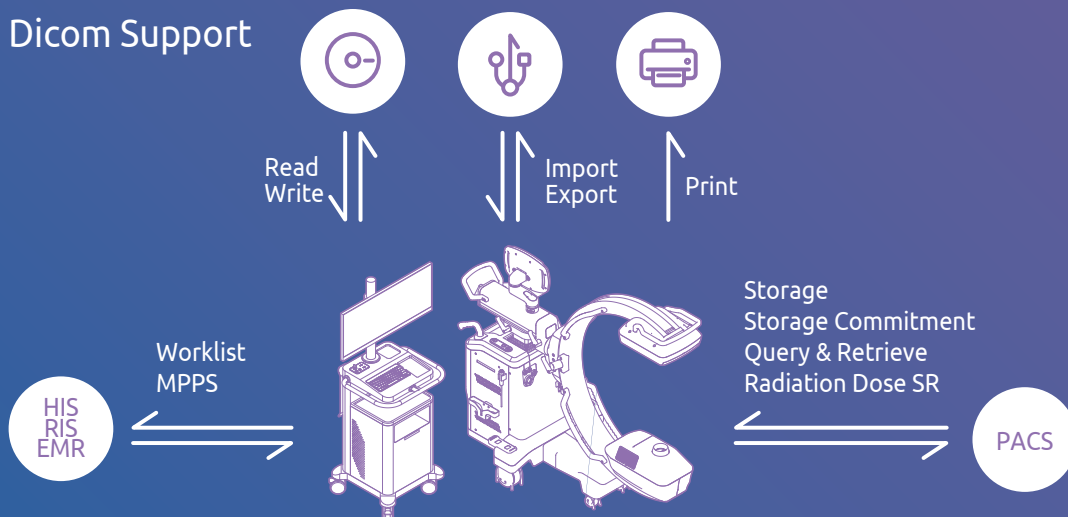
DICOM 3.0

Storage service, worklist service

Recommended System Requirements for ZENIS

Database management In HIPAA Approved Format

Dicom Support

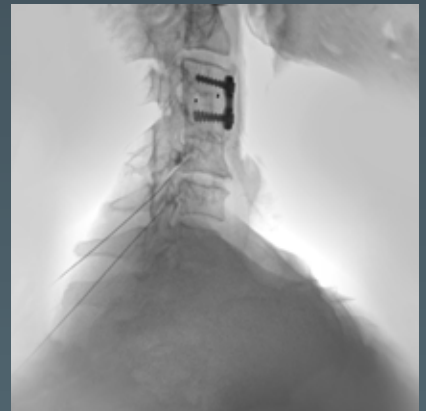


Clinical Data

Providing excellent diagnostic images through accumulated experience



Pain Management Case



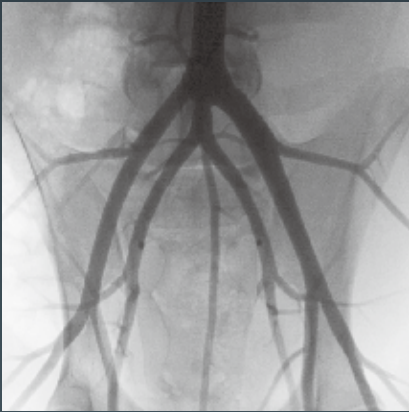
Orthopedics Case



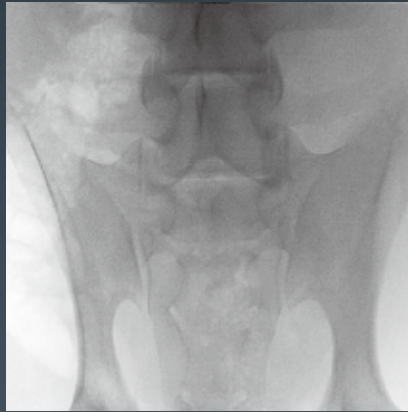
Trauma Case

DSA (Digital Subtraction Angiography)

DSA assists with the diagnosis and procedures through the information gathered from the vessels after injecting contrast medium.



Live image with contrast medium injected



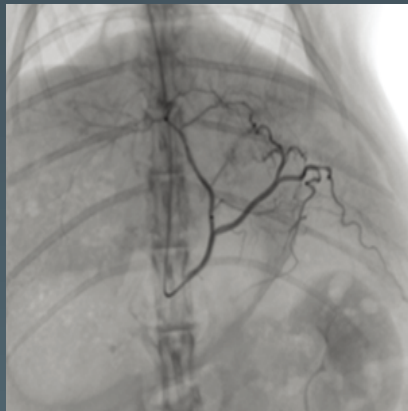
DSA image with vascular parts removed



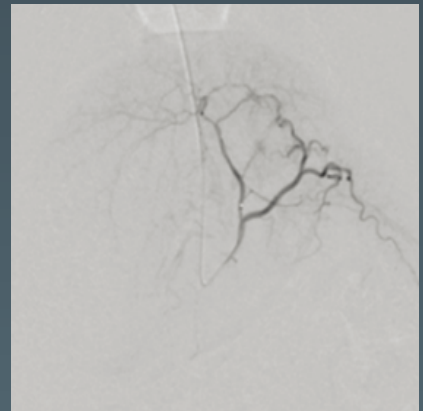
DSA image with non-vascular parts removed



Inserting guide wire using roadmap



Live image with contrast medium injected



DSA image with non-vascular parts removed

Applications

- General Surgery
- Pain Management
- Neuro & Spine Surgery

- Orthopedic Surgery
- Trauma Procedure
- Urology Procedure

- Cardiac Surgery
- Peripheral Artery Diseases
- Vascular Surgery



GENORAY Co.,Ltd.

512, 560, Dunchon-daero, Jungwon-gu,
Seongnam-si, Gyeonggi-do, 13230, Korea
Tel. +82-31-5178-5500 Fax. +82-31-5178-5599
genoray@genoray.com
www.genoray.com

GENORAY America Inc.

147 E. Bristol Lane Orange, CA 92865 USA
Tel. +1-855-436-6729 Fax. +1-714-786-8919
inquiry@genorayamerica.com
www.genorayamerica.com

GENORAY EU GmbH

Jerusalem Str. 14, 10117 Berlin, Germany
Tel. +49-30-509-694-98 Fax. +49-30-530-198-08
info@genorayeuropa.com

GENORAY Japan

Mismicoach Office Building 2F, Shin-Yokohama 1-4-7 Minato-ku,
Yokohama City, Kanagawaken, 222-0033, Japan
Tel. +81-45-620-4971 Fax. +81-45-620-4972
Info@genorayjapan.co.jp
www.genorayjapan.co.jp

GENORAY Türkiye

19 Mayıs mah. İnönü cad. Sümer sok. Sümko
Sitesi i-2 Blok D.3 Kozyatağı 34742. İstanbul Türkiye
Tel. +90-216-463-57-37, +90-216-463-57-53
Fax. +90-216-463-57-80
Ultramedikal@ultramedikal.com.tr



* This X-ray unit may be dangerous to patient and operator unless safe exposure factors and operating instructions are observed.

© GENORAY CO.,LTD. Ver. 2022-10

